

### FISH MINIMUM SIZES

No person shall have in their possession any fish under the minimum size set out in this chart. Please return undersized fish to the sea still alive.

Bass	36cm	Mackerel	20cm
Black Bream	23cm	Mullet	20cm
Brill	30cm	Plaice	27cm
Cod	35cm	Pollack	30cm
Conger Eel	58cm	Red Mullet	15cm
Dab	15cm	Red Sea Bream	25cm
Flounder	25cm	Sardine	11cm
Haddock	30cm	Sole	24cm
Horse Mackerel	15cm	Turbot	30cm
Lemon Sole	25cm	Whiting	27cm
Ling	63cm		

The size of a fish is measured in centimetres of whole fish from tip of snout to the most extreme end of tail fin.



### LANDING OF SHELLFISH

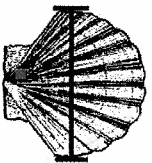
Those shellfish for which there is a minimum size may only be retained onboard whole. Scallops must not be shucked prior to landing.



### CLAM

Hard Clam ...	6.0cm	Grooved Carpetshell	4.0cm
Clam (Praire)	4.0cm	Short-necked clam ...	4.0cm
Carpet Shell	3.8cm	Surf Clam .....	2.5cm
Donax Clam	2.5cm		

### SHELLFISH MINIMUM SIZES



SCALLOP QUEEN ... 4.0cm



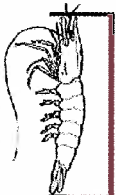
WHEELK 4.5cm



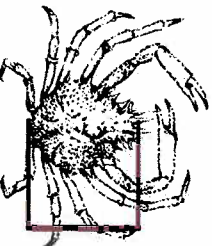
RAZOR FISH 10cm



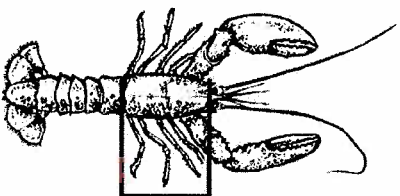
ORMER 9cm



PRAWN 5cm



SPIDER CRAB 12cm



LOBSTER 8.7cm



CHANCRE CRAB 14.0cm  
LADY CRAB ..... 6.5cm

FISHERIES & MARINE RESOURCES  
PLANNING AND ENVIRONMENT DEPARTMENT

HOWARD DAVIS FARM  
TRINITY, JERSEY, JE3 5JP

Phone: 01534 441600, Fax: 01534 441601

Email: [fisheries@gov.je](mailto:fisheries@gov.je), WWW: [www.fisheries.gov.je](http://www.fisheries.gov.je)

These details are correct at time of printing. of appropriate legislation are available from the States Greffe and Fisheries website.

Version issued Sept 2007

States of Jersey

# Recreational Fishing

The Guide to regulations regarding amateur fishing in Jersey



Fisheries and Marine Resources

Jersey's diverse landscape, favourable climate and huge tidal range mean that there is an abundance of marine life. Whether fishing from coastal rocky outcrops, harbours, beaches or afloat, the experience is one to remember. The marine environment is complex and can be affected by man's actions. Careful management is needed to ensure that future generations will be able to enjoy it. Following the regulations and code of conduct is the best way to make this happen.

### FISHING BOAT LICENCES

Any boat used for commercial fishing, (where the catch is sold) must hold a valid licence issued by Fisheries.

### MARKING OF GEAR

All fishing gear (including storeboxes and storepots) left in the sea must be clearly marked with the registered number of the vessel (Registered name for those boats not requiring a J or JY number).

### PARLOUR POTS

Parlour pots shall have at least one escape gap of the legally required size in the parlour area.

### UNDERWATER FISHING

It is forbidden to take shellfish, other than crabs, from the sea while totally or partially submerged and using under-water breathing apparatus, or wearing a face visor, a mask or goggles. (Scallops may be taken by permit only obtainable from Fisheries).

## NETS AND LINES

**Ground Lines:** All ground lines must be below the half tide mark and marked at either end and at 10 metre intervals by a buoy of a diameter not less than 10 cm which in the case of the buoy at either end is indelibly marked with the name and address of the owner. No ground lines are allowed to be used during the period 1<sup>st</sup> April to 15<sup>th</sup> October in any year.

**Set Nets:** These may be used in rocks situated no more than 120 metres apart below the half tide mark and must be marked in the same way as ground lines. Minimum mesh size 90mm.

**Draw Nets:** These may only be used in St. Ouen's Bay and the Royal Bay of Grouville between the rocks known as Le Tas du Nord and the seaward end of Gorey Pier, from one hour before until three hours after low water. Minimum mesh size 90mm.

**Minimum size of nets set from a boat:** The minimum size of net depends on the type of fish being targeted. Contact Fisheries for more information.

**Inshore Netting**  
Nets may not be set by boats within 200 metres of the shore on the south coasts from La Coupe Point to St. Brelade's Bay Pier and during the hours of daylight in the period 1<sup>st</sup> April to 15<sup>th</sup> October inclusive. At no time may a net remain in less depth of water than 130cm.

## FISHING FOR ORNERS

Fishing for ornors may only take place during the period between 1<sup>st</sup> October and 30<sup>th</sup> April inclusive, on the first day of each new moon or full moon and the three following days. Orner fishing dates available from Fisheries offices or website.

### CODE OF CONDUCT

- Return all fish that you do not intend to use back to the sea whilst still alive to help conserve stocks
- Place discarded tackle and all other rubbish in the bins provided or take home for disposal.
- Catch fish for personal and family consumption, not for sale or financial gain.
- "Turn it and Return it" – If you turn over any rocks please return them to their original position to preserve the environment beneath.
- Advise us of any fishing activity that appears to contravene the regulations.
- The sea can rise very quickly in Jersey so be aware of the tides and avoid becoming stranded.
- Check the weather before your trip and let someone know where you are going.