

## CODE OF CONDUCT

- "Turn it and Return it!" – If you turn over any rocks please return them to their original position to preserve the environment beneath.
- Please return all catch that you do not intend to use alive to the sea to help conserve stocks.
- Take rubbish home for disposal.
- Use catch for personal and family consumption, not for sale or financial gain.
- Advise us of any fishing activity that appears to contravene the regulations.
- Check the weather before your trip and let someone know where you are going.
- The sea can rise very quickly in Jersey so be aware of the tides and avoid becoming stranded.

For further information contact Fisheries:  
01534 441 600

For local weather updates contact the Met  
Office: 0900 665 0022 (60p / min)

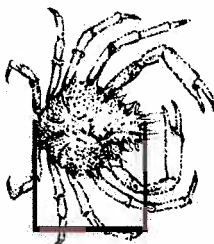
Jersey Coastguard: VHF 16 / 25 / 82  
or phone: 112 or 999 (emergencies)  
885 505 (routine)

To report the sighting of a marine mammal:  
<http://www.gov.je/environment/jerseymarinemammalrecording.aspx>

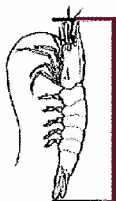
## SHELLFISH MINIMUM SIZES



CHANCRE CRAB 14.0cm  
LADY CRAB ..... 6.5cm



SPIDER CRAB  
12cm



PRAWN  
5cm



ORMER  
9cm

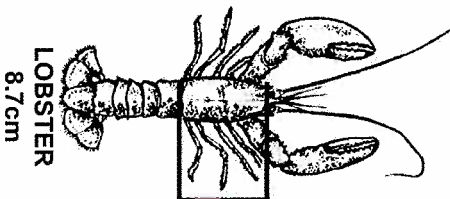


RAZOR FISH  
10cm



CLAM

Hard Clam ....6.0cm	Grooved Carpetshell .....4.0cm	14—
Clam (Praire) 4.0cm	Short-necked clam 4.0cm	15—
Donax Clam 2.5cm	Surf Clam .....2.5cm	15—



LOBSTER  
8.7cm

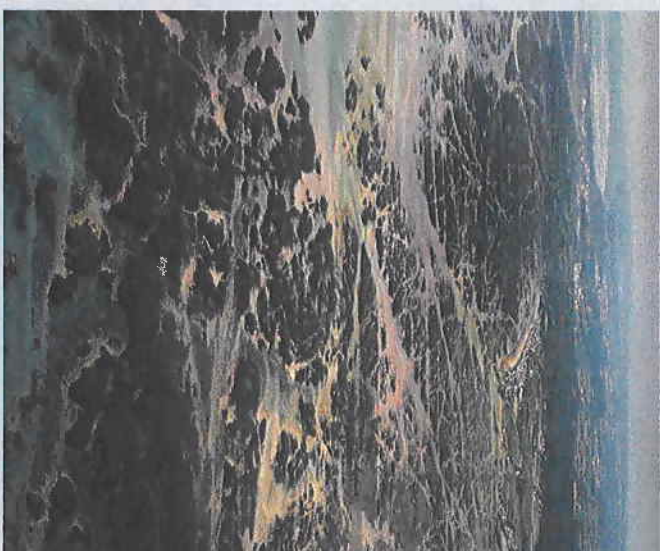
**FISHERIES & MARINE RESOURCES**  
**PLANNING AND ENVIRONMENT DEPARTMENT**  
**HOWARD DAVIS FARM**  
**TRINITY, JERSEY, JE3 5JP**  
Phone: 01534 441600, Fax: 01534 441601  
Email: [fisheries@gov.je](mailto:fisheries@gov.je)  
WWW: [www.fisheries.gov.je](http://www.fisheries.gov.je)

These details are correct at time of printing. 19—  
Copies of appropriate legislation are available from the States Greffe and Fisheries website. 20—  
Version issued Sept 2007

States  
of Jersey

# Recreational Low Water Fishing

The Guide to regulations  
regarding low water  
fishing in Jersey



Fisheries and Marine Resources

Jersey's diverse landscape, favourable climate and huge tidal range mean that there is an abundance of marine life. Whether fishing from coastal rocky outcrops, harbours, beaches or afloat, the experience is one to remember. The marine environment is complex and can be affected by man's actions. Careful management is needed to ensure that future generations will be able to enjoy it. Following the regulations and code of conduct is the best way to make this happen.

### SHELLFISH MINIMUM SIZES

No person shall have in their possession any shellfish under the minimum size set out on these pages.



**CLAM**  
(*Venus verrucosa*)  
Praire  
4.0cm

- 20 or more concentric grooves radiating outwards
- Ridges intersect the grooves to form teeth



**SHORT NECKED (MANILA) CLAM**  
(*Ruditapes philippinarum*)  
Palourde croisée japonaise  
4.0cm

- Shell has distinctive black and white markings



**HARD CLAM**  
(*Callista chione*)  
Verris fauve  
6.0cm

- Polished golden or reddish-brown shell
- Rays of deeper colour and of varying width



**GROOVED CARPETSHELL**  
(*Ruditapes decussatus*)  
Palourde croisée d'Europe  
4.0cm

- Concentric grooves and radiating ridges creating a chequered appearance



**CARPETSHELL**  
(*Venerupis pullastra*)  
Palourde Bleu  
3.8cm

- Similar size and shape to Grooved Carpetshell but grooves and ridges less pronounced



**DONAX CLAM**  
(*Donax sp.*)  
Fillons  
2.5cm

- Distinct slender wedge shaped shell



**SURF CLAM**  
(*Spisula solida*)  
Spisule épaisse  
2.5cm

- Triangular and equilateral shaped shell



**RAZOR CLAM**  
(*Ensis sp.*)  
Couteaux  
10.0cm

- Distinctive shaped shell



**COMMON PRAWN**  
(*Palaeomon serratus*)  
Bouquet  
5.0cm

- Distinctive spike ('rostrum') protruding from the head.
- Tiger stripes



**ORMER**  
(*Haliotis tuberculata*)  
Ormeau  
9.0cm

- Flattened spiral shell
- Series of holes

### FISHING FOR ORMERS

Fishing for ormers may only take place during the period between 1<sup>st</sup> October and 30<sup>th</sup> April inclusive, on the first day of each new moon or full moon and the three following days. Ormer fishing dates available from Fisheries offices or website.

### POSSESSION OF ORMERS

Ormers (other than frozen) may only be possessed during the period between 1<sup>st</sup> October and 30<sup>th</sup> April inclusive and then only on the first day of each new or full moon and the three following days on a vessel (five following days on land).